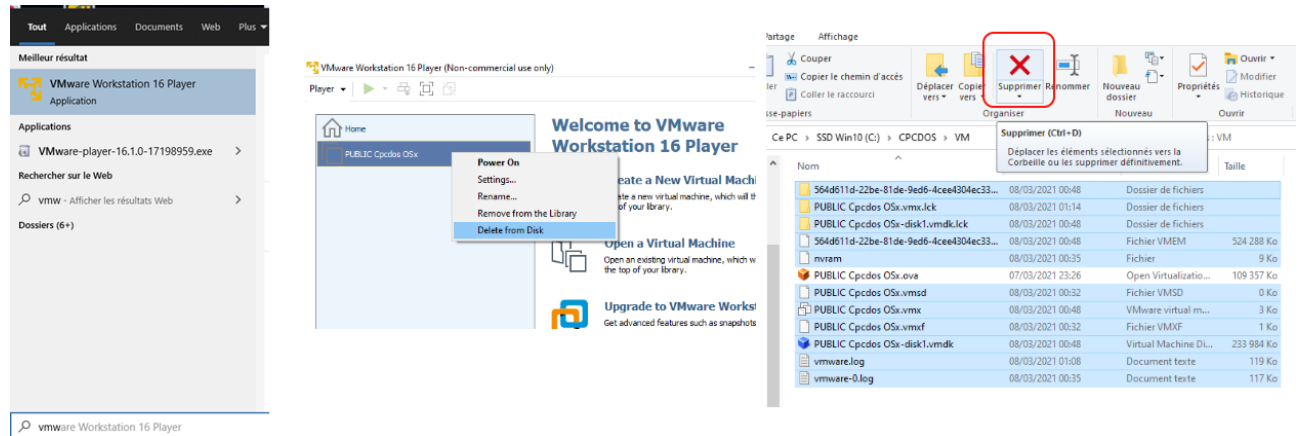
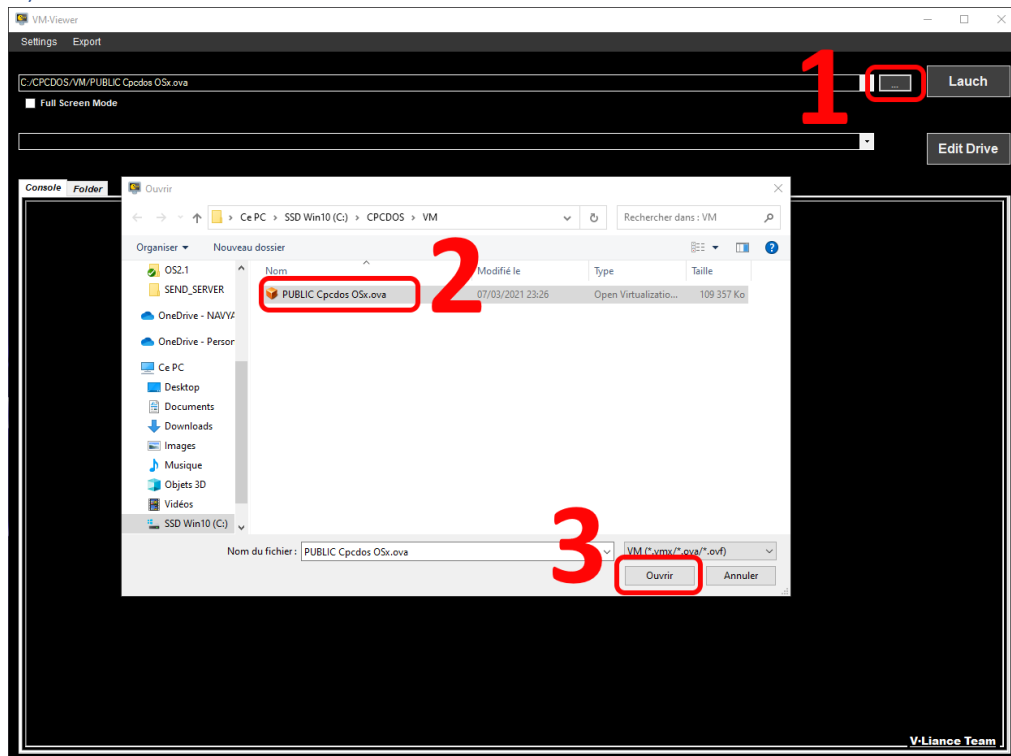


## 1) IF YOU WANT START FROM SCRATCH

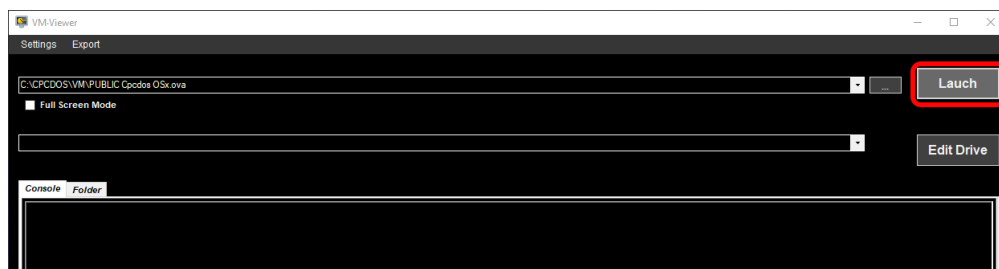
Delete from disk, and delete files.



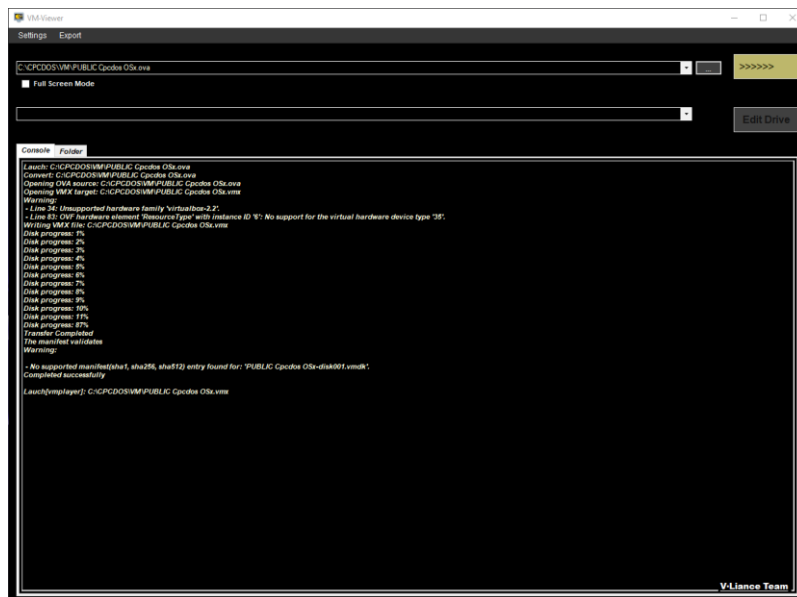
## 2) SELECT .OVA FILE



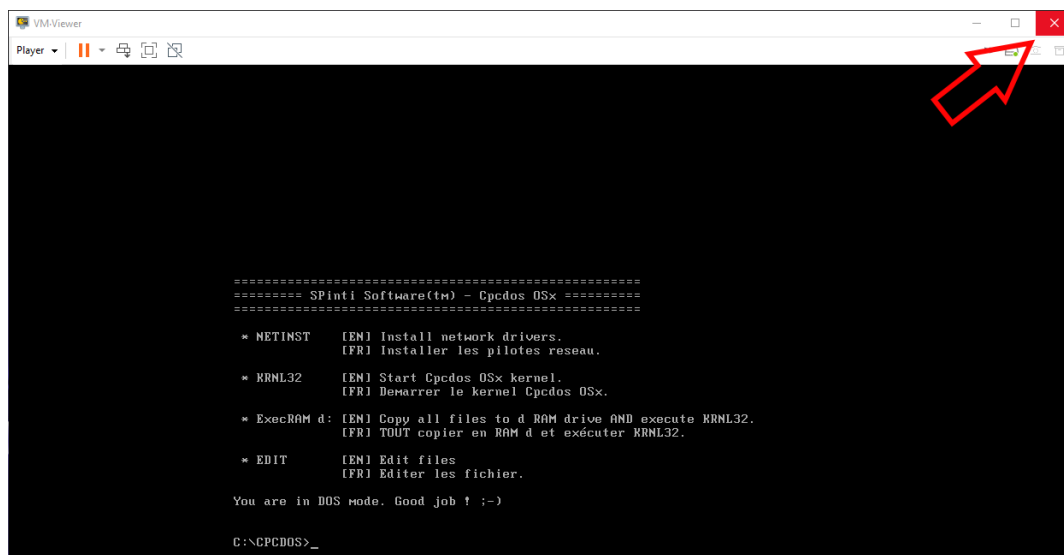
### 3) LAUNCH VM FOR THE FIRST TIME



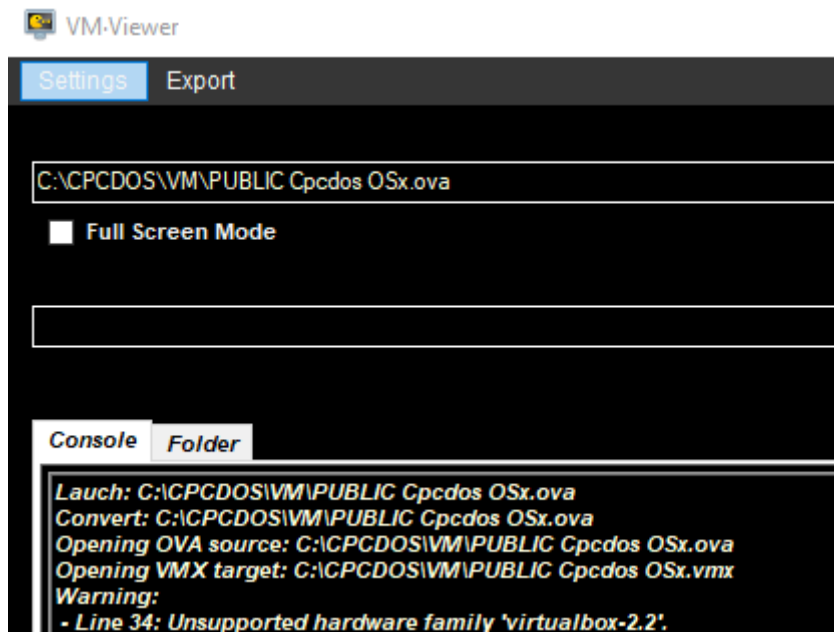
### AND WAIT



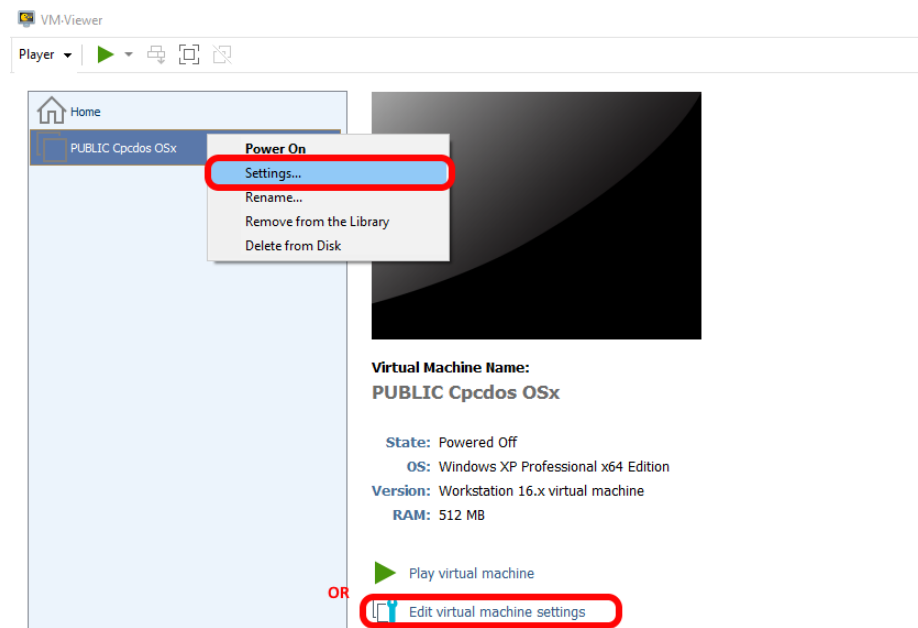
### 4) CLOSE VM



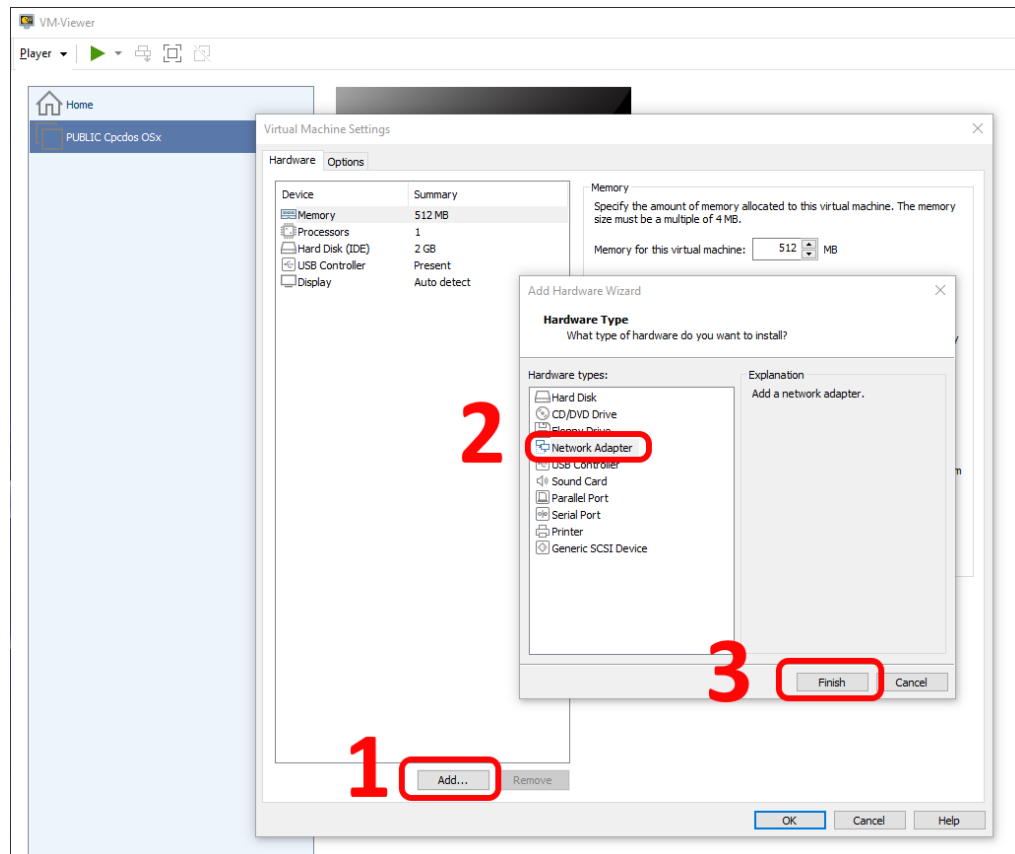
## 5) AND GO TO VMWARE SETTINGS



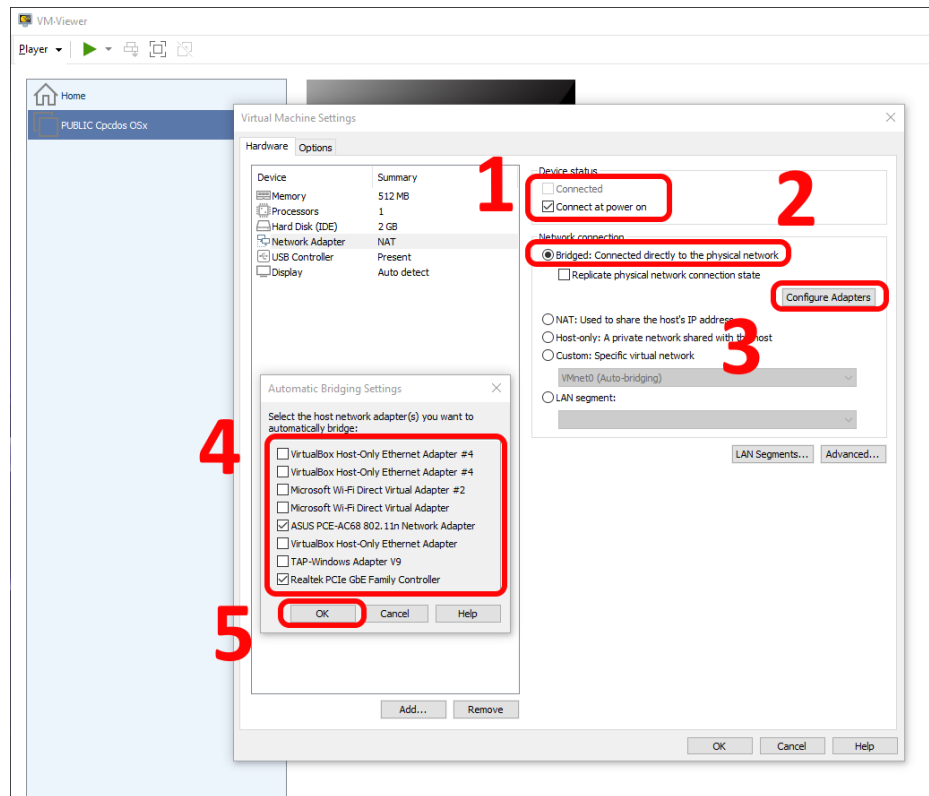
## 6) GO TO CPCDOS VM SETTINGS



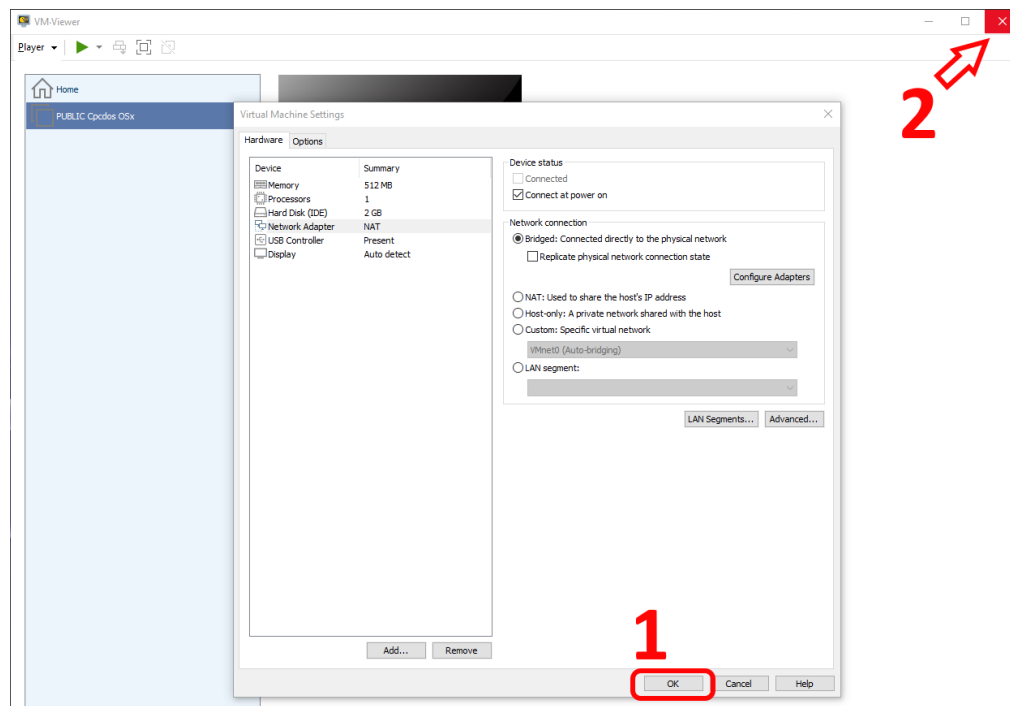
## 7) ADD NETWORK CARD



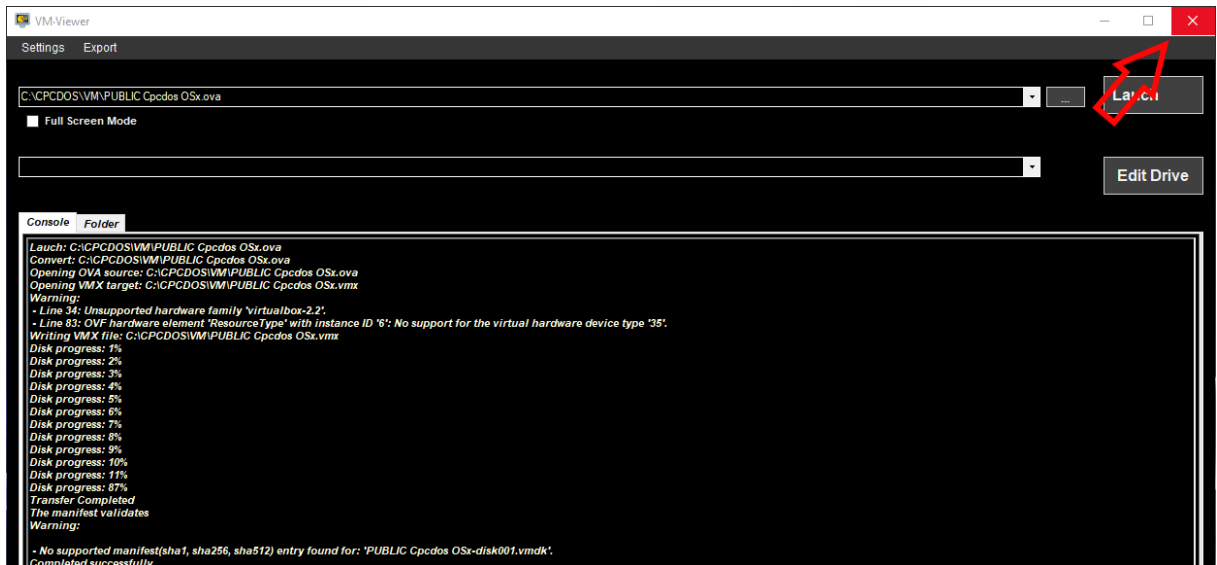
## 8) USE BRIDGE MODE AND CHECK YOUR PHYSICAL WiFi AND Ethernet NETWORK CARD



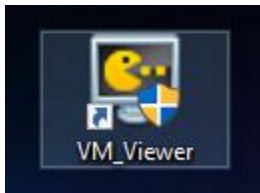
## 9) APPLY and CLOSE VMWARE



## 10)AND CLOSE ALSO VM-VIEWER



## 11)RELAUNCH VM-VIEWER



## 12)YOU CAN SEE THAT YOU CAN EDIT DRIVE (Or Launch)

